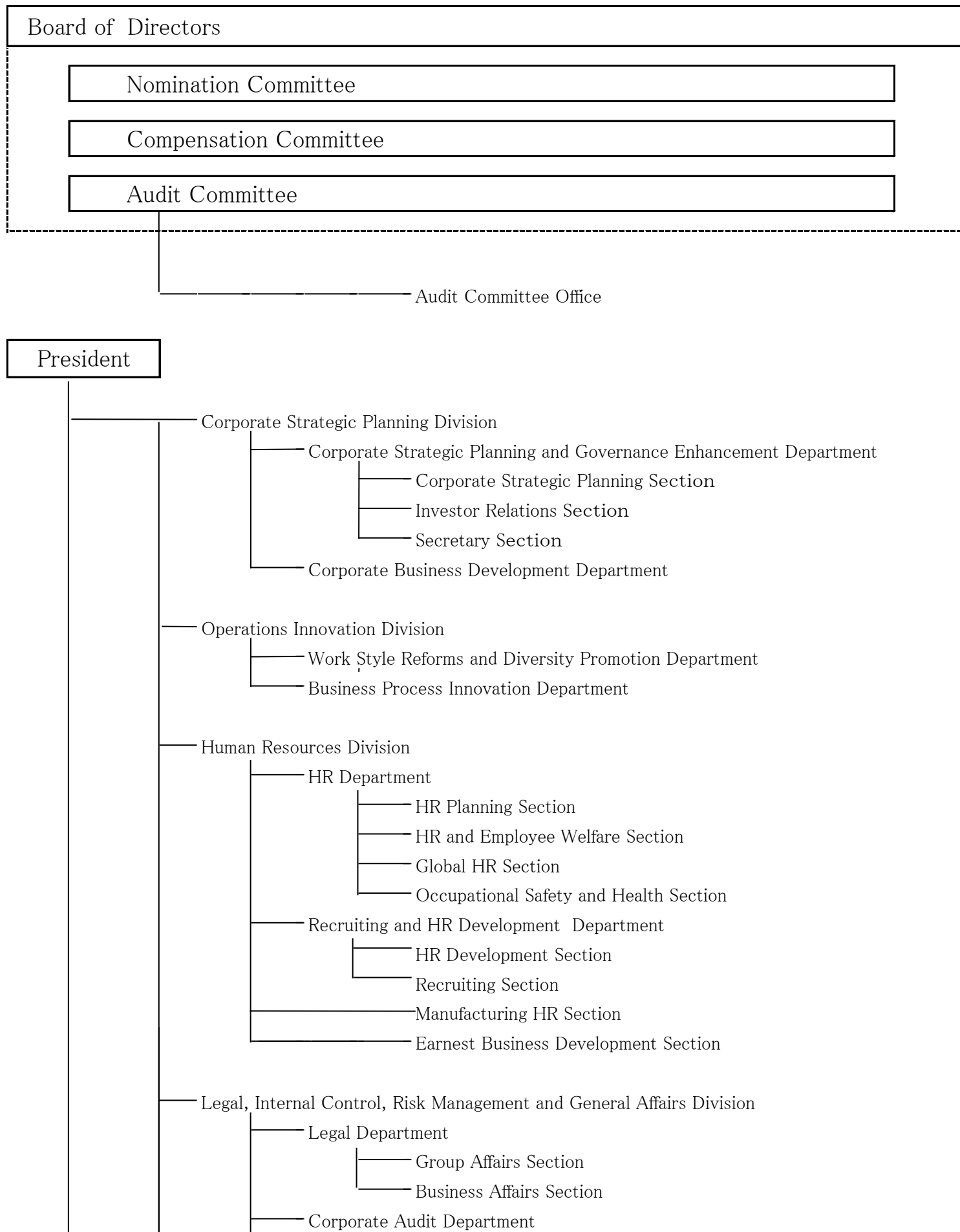
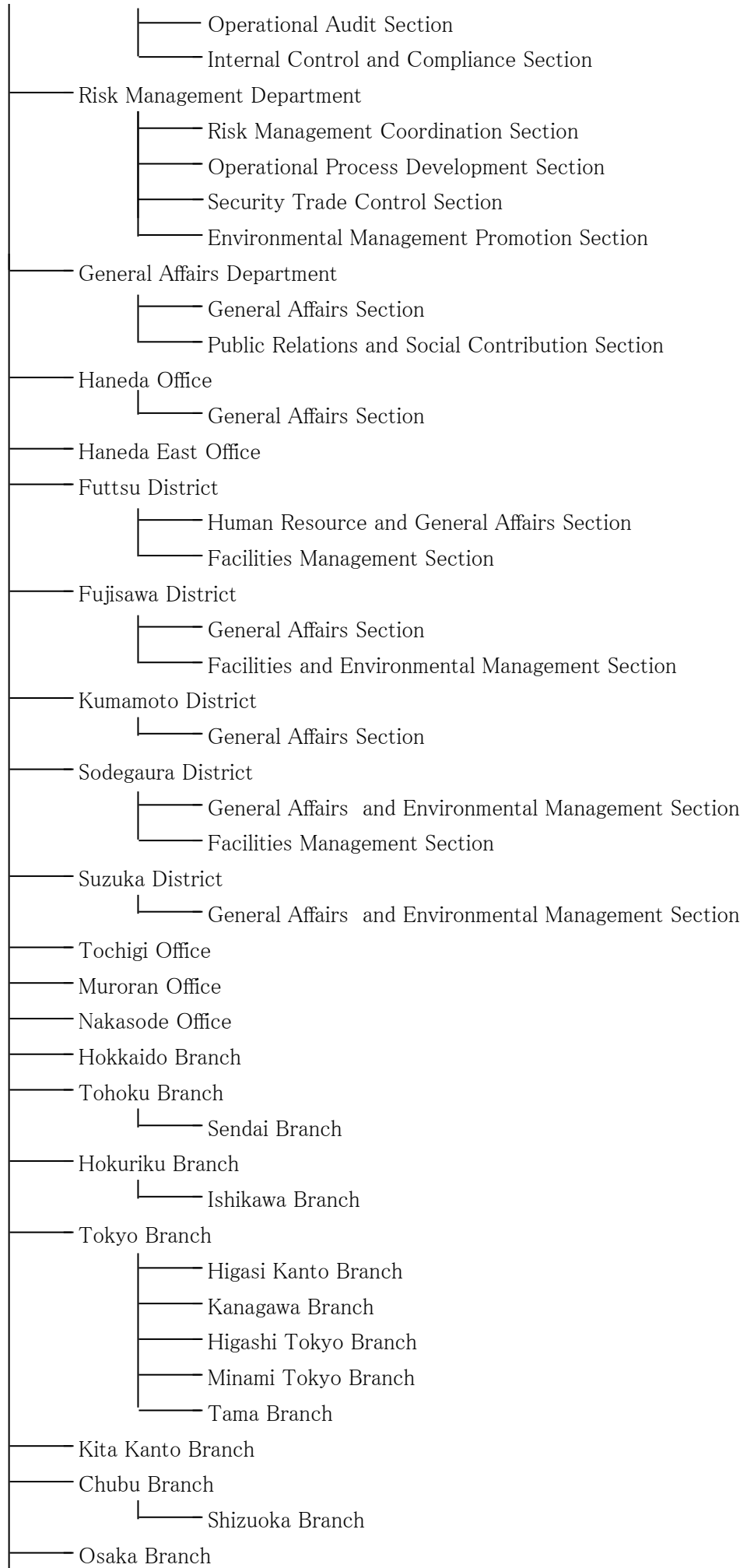
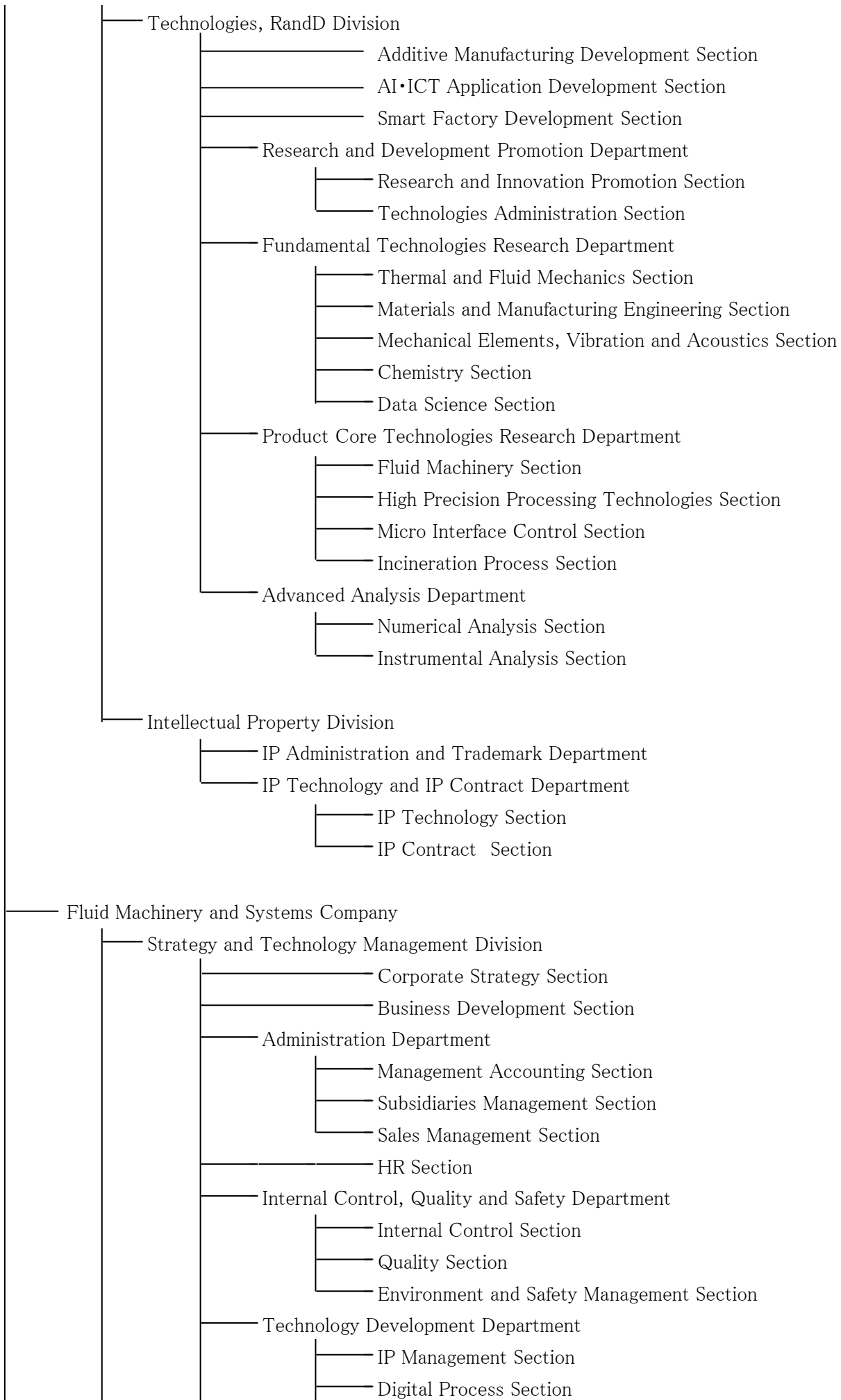


Organization Structure of EBARA CORPORATION (As of 2019. 01. 01)







- Foundry Technology Section
- IT Promotion Section
- China and East Asia Section
- Southeast Asia Section
- Middle East Section
- Europe and Africa Section

— Standard Pump Business Division

- Planning and Administration Department
 - Recruiting and HR Development Section
 - Planning and Administration Section
 - Product Planning Section
 - Trade Operation Section
- Global Sales Headquarters
 - Business Development Section
 - Marketing and Planning Section
- Fujisawa Plant
 - Facility Engineering Section
 - Logistic Section
 - Production Control Section 1
 - Production Control Section 2
 - Quality Assurance Section
 - Procurement Section
- Global Production Promotion Department
 - Global Production Planning Section
 - Factory Automation Promotion Section
 - Production Engineering Section
- Development and Engineering Department
 - Application Engineering Section
 - Standard Pump Engineering Section
 - Surface Pump Development Section
 - Submersible Motor Pump Development and Engineering Section
 - System Development and Engineering Section
 - New Technology Product Development Section
- ICT Promotion Department
 - ICT Planning and Development Section
 - Business Process Promotion Section
 - System Technology Section
- Domestic Sales Promotion Department
 - Sales Development Section
 - Sales and Marketing Section
 - Service Engineering Section
 - Standard Parts Control Section
 - Service Procurement Section

