

## EBARA Global Service Field Service Leaflet



### EBARA MACHINERY INDIA PVT. LTD.

Registered Office:  
2nd Floor, 305, North, 2nd Street, Sector 3,  
Thonduru Village, Varadaiahpalem Mandal, SRICITY,  
Chittoor District, Andhra Pradesh 517 546, India

Corporate Office - Chennai:  
First Floor, No.133 , Velacherry Road.  
Guindy, Chennai - 600032, Tamil Nadu, India

Sales Office - Mumbai:  
902 Bhumiraj Costarica, Sector 18,  
Palm Beach Road, Sanpada,  
Navi Mumbai - 400705, Maharashtra, India.



#### Contact

Mumbai : +91 22 4878 2255/2222

Chennai : +91 44 2235 1926

Delhi : +91 98196 54337

Email : [custompumps@emi.ebara.com](mailto:custompumps@emi.ebara.com)



# EBARA Field Service

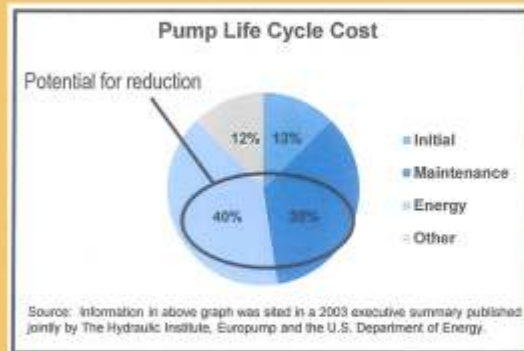
Pumps and axially equipment in plant shall be maintained periodically or based on its condition.

It is required that plenty of correct expertise and its practice for the maintenance, such as evaluation of used parts and/or assembly of the multistage pump.

EBARA Field Service provides the expertise to site engineer and workers during overhaul at customer's work shop and during site investigation.

Our accumulated diagnostic/preventive engineering expertise and know-how are fully made use of in this service, earning us the title of a reliable provider of services for optimizing the maintenance.

## 1. Maintenance and Support



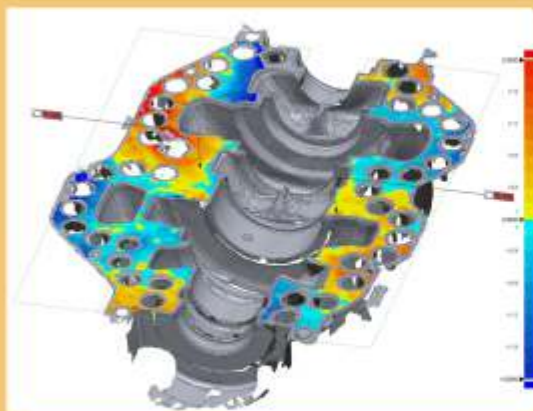
Pump Life Cycle Cost

### Why is regular service of a pump improvement ?

- 80% of Plant accident are caused by Human Error.
- 75% of Pump lifecycle cost comes from Maintenance and Energy.

### What EBARA can offer to reduce Maintenance Cost ?

Our field engineer can evaluate pump parts life and propose an optimized maintenance cycle.  
i.e., wearing, bearing to abrasion resistance.  
In the maintenance planning stage, we can assist planning of preventive maintenance.  
i.e., Maintenance lecture with using 3D technical manual.



Inspection result of flatness

### Check pump condition and operating point at site.

- We can propose upgrading of pump to enhance reliability and efficiency.  
i.e., Hard facing/material changing of parts, purification of service liquid, performance optimization.

### What EBARA can offer to Retrofit and Performance Optimization?

EBARA has been manufacturing various kinds of pumps over 100 years, and possess technology to design hydraulic parts.  
EBARA re-generation service (reverse engineering) is supported by the technology, so the service shall contribute result to all customer.  
For example, EBARA field service engineer measures BB3 pump casing as shown in left side Figure.

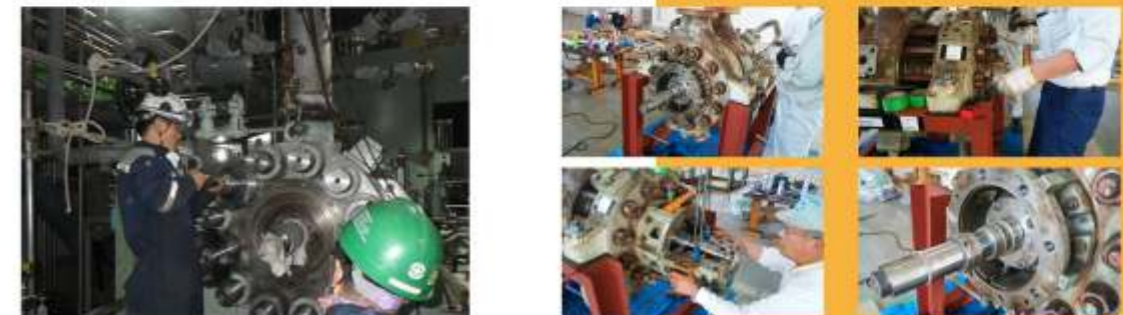
## 3. Installation and Commissioning Support



EBARA field service engineer advise correct installation work and commissioning work for site staff, customer prevents issue such as vibration and rotor-seized due to incorrect work. The engineer must furnish following skill; alignment for base and pumps, field inspection for auxiliary equipment, safety start up and basic training for site staff.

## 4. Technical advisor

Technical adviser service is available for Large sized, multistage, API pumps and auxiliary equipment. We also supply consulting service for regular maintenance and overhaul supporting service on site.



EBARA field service engineer shall propose how to plan overhaul and maintain pumps kindly based on EBARA OEM knowledge and their experience.  
The engineer shall advise pump overhaul on site, they evaluate the parts life, advise correct assembly procedure, prepare detailed O/H reports and propose plan for next O/H and retrofit of the pumps based on the condition.

## Contact & Communicate

### 1) Contact

EBARA Pump Field Service is organized by EBARA Japan and Local Service Offices.  
EBARA Corporation/ Fluid Machinery & Systems Company/ Custom Pump Div.  
[www.ebara.co.jp](http://www.ebara.co.jp)

### 2) Communicate

Users can communicate by E-mail, Telephone, Fax, and Directly In-person with our Service Staff.  
Please feel free to tell us your specific needs via our "Kind and Speedy" Service.

