

EBARA Global Service Re-generation Service Leaflet



EBARA MACHINERY INDIA PVT. LTD.

Registered Office:
2nd Floor, 305, North, 2nd Street, Sector 3,
Thonduru Village, Varadaiahpalem Mandal, SRICITY,
Chittoor District, Andhra Pradesh 517 546, India

Corporate Office - Chennai:
First Floor, No.133 , Velacherry Road.
Guindy, Chennai - 600032, Tamil Nadu, India

Sales Office - Mumbai:
902 Bhumiraj Costarica, Sector 18,
Palm Beach Road, Sanpada,
Navi Mumbai - 400705, Maharashtra, India.

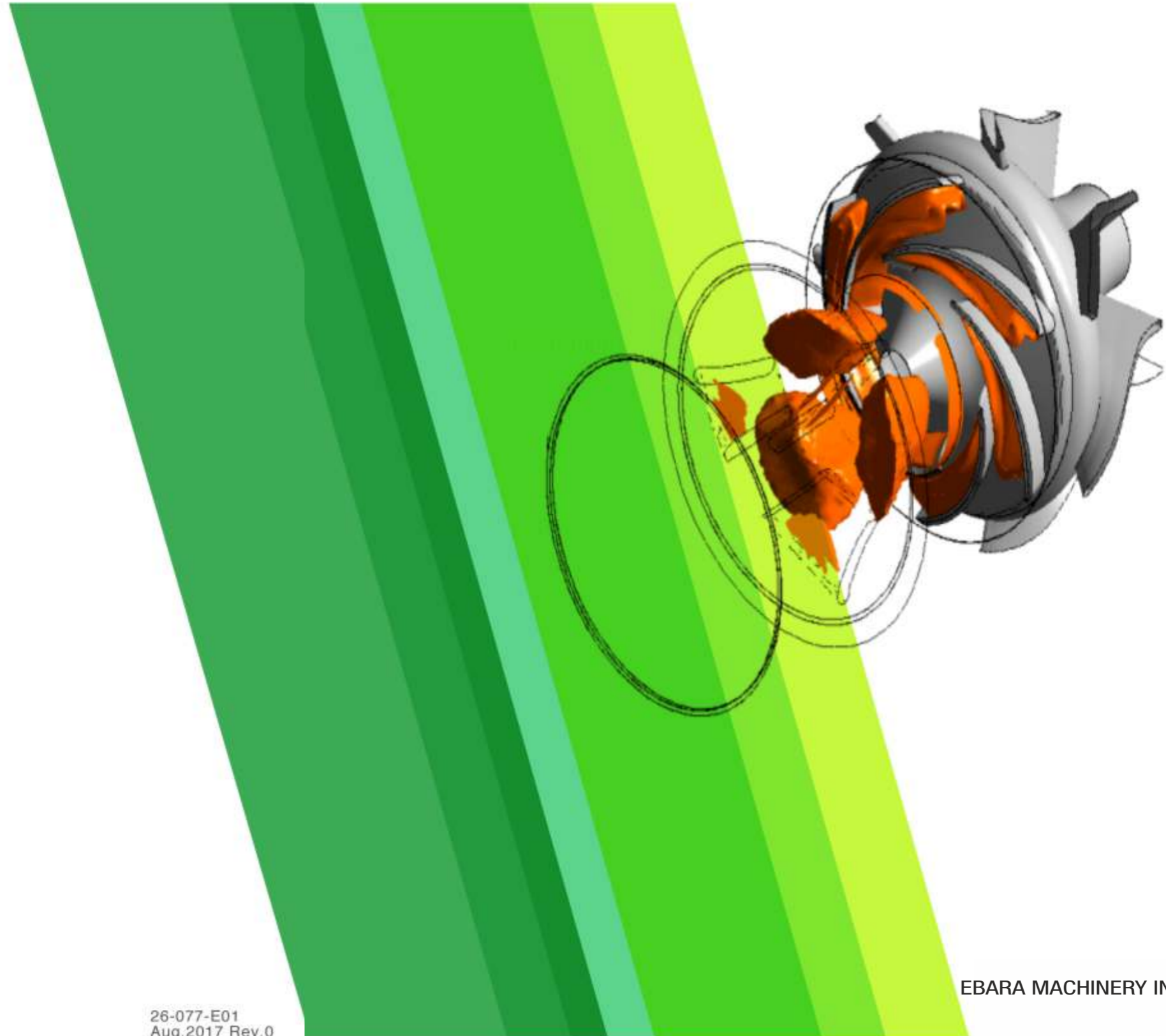
Contact

Mumbai : +91 22 4878 2255/2222

Chennai : +91 44 2235 1926

Delhi : +91 98196 54337

Email : custompumps@emi.ebara.com



EBARA Re-generation Service

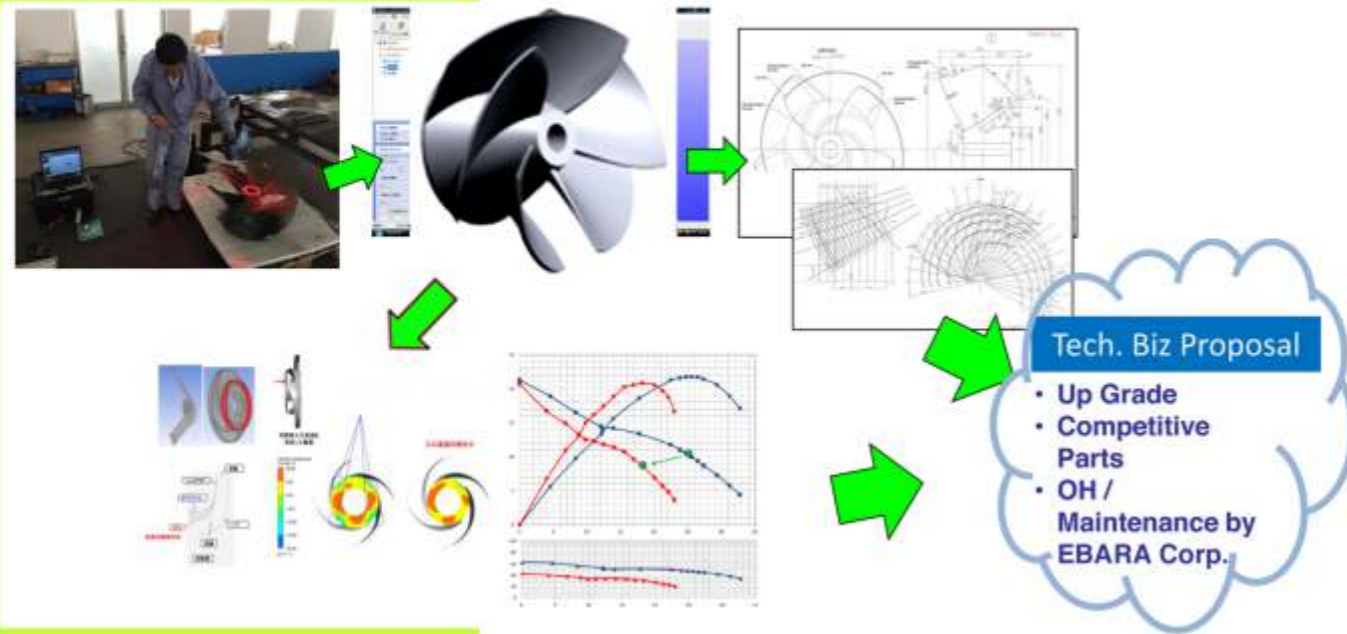
Ebara Re-generation services is to resolve your trouble and deliver a replacement for value-added on various damaged pump and parts. If you have any consulting matter on Upgrade, Competitive parts, Adjustment of Pump Performance, Overhaul, Renewal, and Trouble Shooting. etc., Please contact Ebara corp.

- Case 1 : To replace impeller, diffuser, casing and other parts.
- Case 2 : To repair, renewal of pump and Equipment.
- Case 3 : To reduce the power consumption by performance improvement.

Re-generation engineering is Completed as EBARA Quality production.

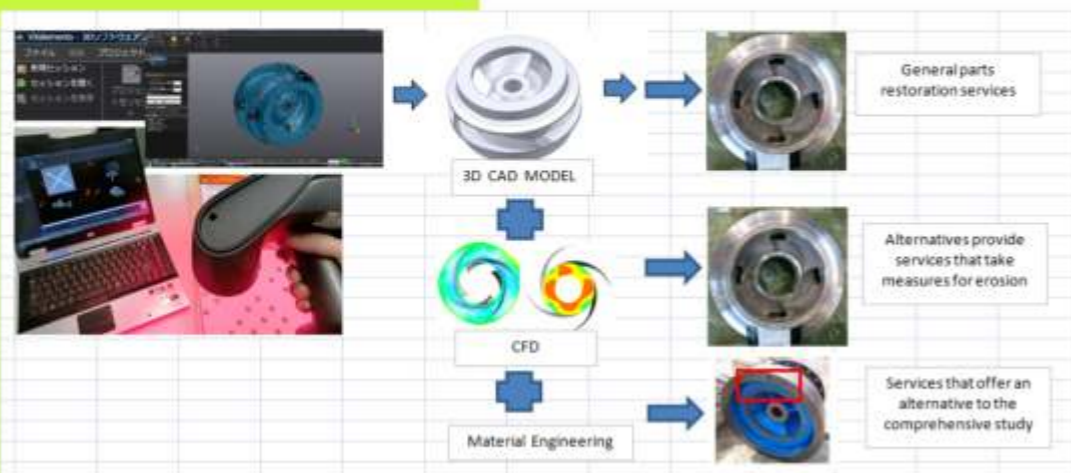
3D Scan & 3D Modeling process

Re-generation process is consists of 3D Scanning, data conversion, 3D modeling, FEM, simulation analysis, 2D/3D CAD drawing, production, inspection and test Step.



Pump Impeller Re-generation Service

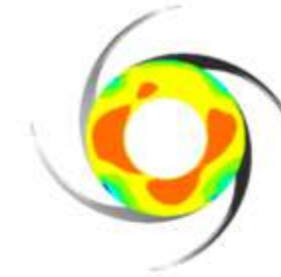
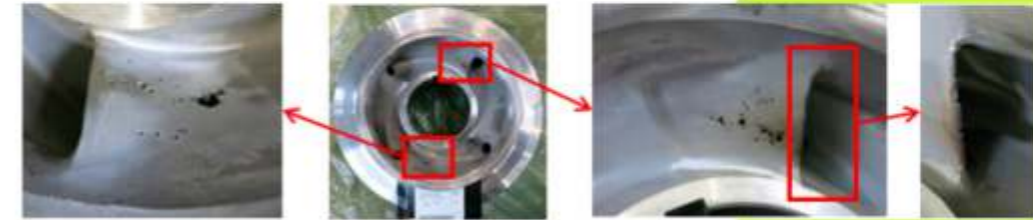
Impeller application is available for closed/ semi-open/ open impeller and various size of impeller.



Typical record

1. Impeller erosion of High pressure pump

Since the first stage impeller of the high-pressure pump of "A" company has been replaced in about two years by erosion, user asked support to EBARA. We determine of the cause throughout flow analysis (CFD), and then provided the improved impeller.

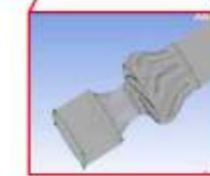
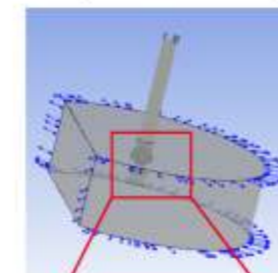


Improved Impeller after 1 year operation.

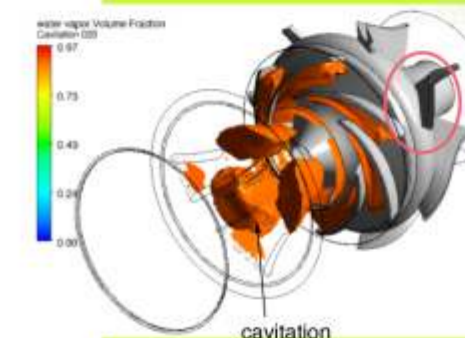
2. Casing erosion of Vertical pump

In the vertical pump of "B" company, the trouble in the diffuser casing has occurred in a short period. As user could not be satisfied with the technical description of "B" company, user asked support to EBARA. We determine of the cause throughout flow analysis(CFD), and then provided the improved pump.

Flow analysis and consideration
Carry out flow analysis with cavitation



Flow analysis setting



EBARA's view
Cavitation is not cause of this erosion

Contact point :

This service exemplifies EBARA's "Kind and Speedy" engineering service concept.

The EBARA Group is always ready to response to all pump users via our "Kind and Speedy" engineering service.

EBARA Corp. / Custom Pump Business Unit / Fluid Machinery & Systems Company / Global Service Business Division

